

AUTOMATIC TRANSFER SWITCH

- UTILITY TRANSFER BREAKER
- GENERATOR TRANSFER BREAKER

- TRANSFER MODE
- TRANSFER CONTROL
- TRANSFER FAIL
- BREAKER CLOSE
- SERVICE DISCONNECTED
- SERVICE DISCONNECT

SERVICE DISCONNECT INSTRUCTIONS

TO DISCONNECT UTILITY AND GENERATOR
 1. TURN OFF TRANSFER SWITCH TO OFF POSITION.
 2. TURN OFF UTILITY AND GENERATOR BREAKERS.
 3. TURN OFF SERVICE DISCONNECT SWITCHES.
 4. LOCK SERVICE DISCONNECT SWITCHES IN OFF POSITION.

TO RE-CONNECT TRANSFER SWITCH:
 1. MAKE SURE ALL CIRCUITS ARE OPEN.
 2. TURN ON SERVICE DISCONNECT SWITCHES.
 3. TURN ON UTILITY AND GENERATOR BREAKERS.
 4. TURN ON TRANSFER SWITCH TO AUTO POSITION.

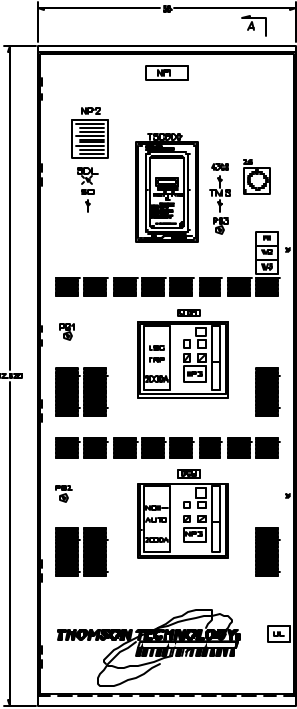
MAKE BEFORE BREAK CONTACTS
 GENERATOR AND UTILITY SOURCES MUST BE SYNCHRONIZED

WARNING
 MORE THAN ONE LIVE CIRCUIT
 SEE DIAGRAM

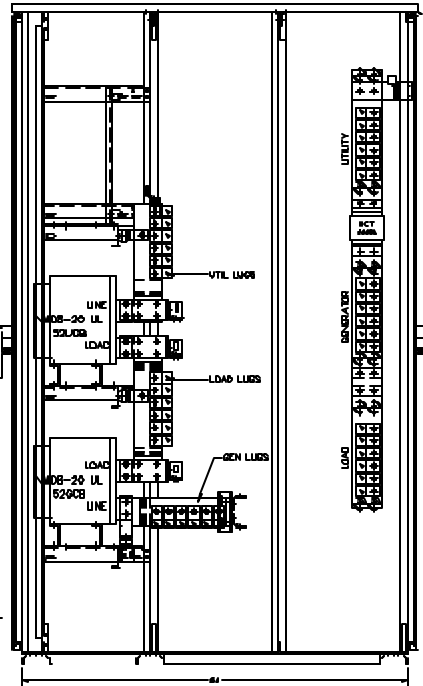
AVERTISSEMENT
 PLUS D'UN CIRCUIT SOUS TENSION VOIR SCHEMA

WARNING
 DISCONNECT ALL SOURCES OF SUPPLY BEFORE SERVICING

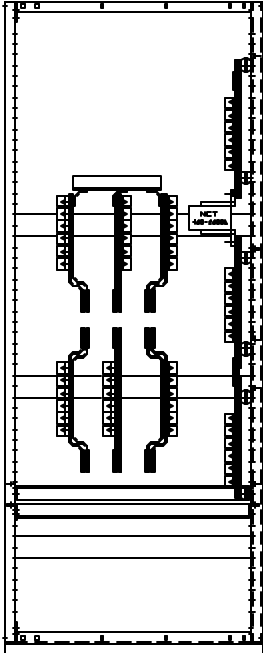
AVERTISSEMENT
 COUPER TOUTES LES SOURCES D'ALIMENTATION AVANT DE FAIRE LES REPARATIONS



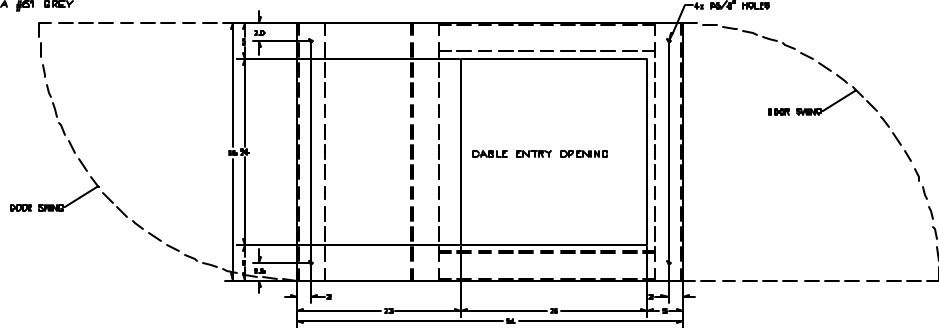
FRONT VIEW
 (OUTER DOOR REMOVED)
 FINISH ASA #01 GREY



RIGHT SIDE VIEW
 SECTION A-A



BACK VIEW



ENCLOSURE TYPE
 NEMA 3R

SIZE (AMPS)

- 600A
- 1200A
- 1800A
- 3000A
- 2 POLE
- 3 POLE
- 4 POLE
- 3/400 NEUTRAL

NOTES:

1. REFER TO SUPPLY IN SPEC. PREP.
2. FRONT AND REAR COVER REMOVED.
3. COVER MUST BE SECURED.
4. ALL WIRE MUST BE PROPERLY BUNDLED AT 90 DEGREE ANGLES TO THE PANEL COVER.
5. ALL WIRE MUST BE PROPERLY COVERED.
6. ALL WIRE MUST BE PROPERLY LABELLED.
7. ALL WIRE MUST BE PROPERLY IDENTIFIED.
8. ALL WIRE MUST BE PROPERLY IDENTIFIED.
9. ALL WIRE MUST BE PROPERLY IDENTIFIED.
10. ALL WIRE MUST BE PROPERLY IDENTIFIED.

CONNECTION DATA

TERMINALS: 1/2\"/>

GROUNDING

GROUNDING: 1/2\"/>

LOADS

LOADS: 1/2\"/>

ENCLOSURE

ENCLOSURE: 1/2\"/>

SPECIAL REQUIREMENTS

REFER TO SHEET #

APPROVED FOR CONSTRUCTION
 MASTER COPY REFERENCE COPY OF _____
 MULTIPLE UNIT MAKE ORDER
 RELEASED FOR INFORMATION
 AUTH. BY: _____ DATE: _____

DRAWING NO.	REFERENCE DRAWING	NO.	REVISIONS	BY	DATE



AUTOMATIC TRANSFER SWITCH
 MODEL TS 800
 PHYSICAL LAYOUT
 663

DATE	BY	CHKD	DATE	REV
02	SH		04-08-10	0

FORMER FILE NO. W-027510-01 SHEET 1/3