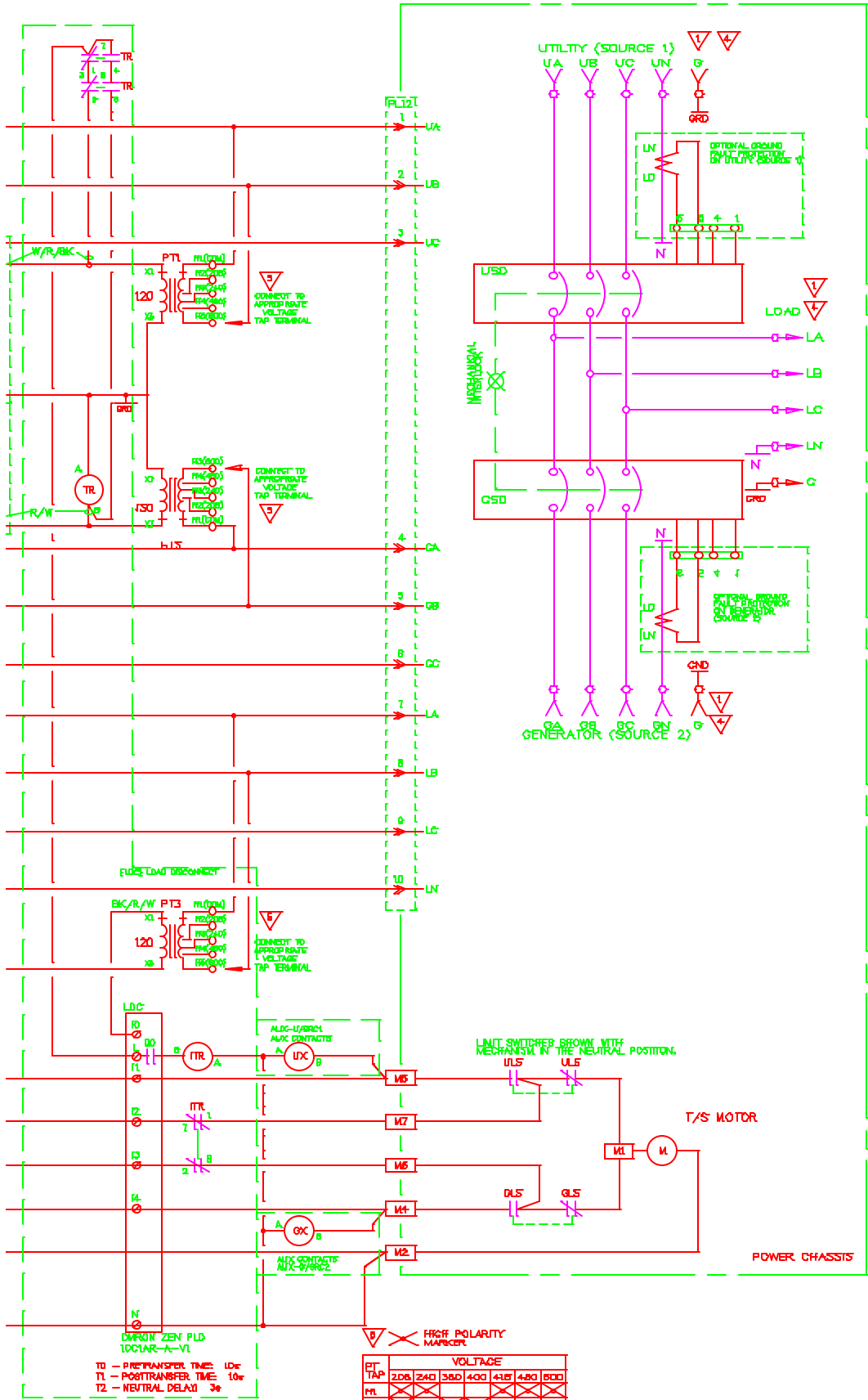


QUANTITY 3	QUANTITY 2	QUANTITY 1	AUX-U/SPRCL AUX CONTACTS 10A, 120/240VAC 5A, 30VDC, RSP
3A C-21	2A C-21	1A C-21	
UX C-20	UX C-20	UX C-20	
3B C-23	2B C-22	1B C-21	
AUX-U OPT.	AUX-U OPT.	AUX-U OPT.	
3D C-21	2D C-21	1D C-21	
UPA C-2F	UPA C-2F	UPA C-1F	UPA UTIL/SPRCL AUX CONTACTS 10A, 120VAC
3E C-23	2E C-22	1E C-21	
UPA OPT.	UPA OPT.	UPA OPT.	
3X C-21	2X C-21	1X C-21	AUX-G/SPRCL AUX CONTACTS 10A, 120VAC
GX C-2Z	GX C-2Z	GX C-2Z	
3Y C-23	2Y C-22	1Y C-21	
AUX-G OPT.	AUX-G OPT.	AUX-G OPT.	
3B C-21	2B C-21	1B C-21	
GP C-2Z	GP C-2Z	GP C-1Z	GP GEN/SPRCL AUX CONTACTS 10A, 120VAC
3F C-23	2F C-22	1F C-21	
OPA OPT.	OPA OPT.	OPA OPT.	

APPROVED FOR CONSTRUCTION
 MASTER COPY REFERENCE COPY OF _____
 MULTIPLE UNIT WORK ORDER
 RELEASED FOR INFORMATION
 AUTH. BY: _____ DATE: _____

DRAWING No.	REFERENCE DRAWINGS	No.	REVISIONS
		1	REVISE LOG COF

WINGS SUBJECT TO CHANGE WITHOUT NOTICE.



TSC80 CONTROLLER FACTORY SETTINGS

ENGINE START TIMER:	3	(0-60s)
ENGINE WARM-UP TIMER:	2	(0-60s)
ENGINE COOLDOWN TIMER:	2	(0-30m)
UTILITY RETURN TIMER:	2	(0-30m)
NEUTRAL DELAY TIMER:	3	(0-60s)
TRANSFER FAIL TIMER:	30s	(FIXED)
EXERCISE TIMER:	20m	(FIXED)
UTIL U/V TIMER:	1s	(FIXED)
GENERATOR U/V TIMER:	5s	(FIXED)
GENERATOR U/F TIMER:	5s	(FIXED)
UTILITY U/V (PU):	88%	(70-96)
UTILITY U/V (PU):	90%	(70-96)
GENERATOR U/V (DO):	88%	(70-98)
GENERATOR U/V (PU):	90%	(5% > 1)
GENERATOR U/F:	90%	(70-90)

ALL SETTINGS ARE FIELD ADJUSTABLE UNLESS NOTED

TRANSFER SWITCH WIRING OPTIONS

- FTS4 TEST SWITCH
- AUX-G(SRC2) CONTACTS
EQTY [EMAX 3]
- AUX-U(SRC1) CONTACTS
EQTY [EMAX 3]
- UTIL(SRC1) PWR AVL CONT'S
EQTY [EMAX 3]
- GEN(SRC2) PWR AVL CONT'S
EQTY [EMAX 3]
- LDC[LOAD DISCONNECT CONTACT]
- ENCLOSURE HEATER EXT. PWR
- ENCLOSURE HEATER INT. PWR
- SHUNT TRIP UTILITY SWITCH
[SHUNT VOLTAGE] 1
- SHUNT TRIP GENERATOR SWITCH
[SHUNT VOLTAGE] 1
- PROG. EXERCISE TIMER
- UTILITY SWITCHING DEVICE
 - MOLDED CASE SWITCH
 - THERMAL MAGNETIC
 - ELECTRONIC (LD)
 - ELECTRONIC (LSD)
 - POLES:
 - TRIP RATING: A
 - WITHSTAND RATING: KA B
- GENERATOR SWITCHING DEVICE
 - MOLDED CASE SWITCH
 - THERMAL MAGNETIC
 - ELECTRONIC (LD)
 - ELECTRONIC (LSD)
 - POLES:
 - TRIP RATING: A
 - WITHSTAND RATING: KA B

▽ SYSTEM MUST UTILIZE A SOLIDLY GROUNDED NEUTRAL
 ▽ 3 PHASE CONNECTION SHOWN FOR SINGLE PHASE CONNECT A AND B ONLY.

▽ B PHASE MUST BE HIGHER VOLTAGE TO GROUND ON 4 WIRE DELTA SYSTEMS.

SERIAL NUMBER:

AS BUILT BY:	TESTED BY:
AS BUILT DATE:	TESTED DATE:

DRAWINGS AND/OR OTHER TECHNICAL INFORMATION SUPPLIED BY THOMSON TECHNOLOGY ARE THE PROPERTY OF THOMSON TECHNOLOGY. THE SALE OF EQUIPMENT AND/OR THE PURCHASE OF EQUIPMENT IS CONTINGENT UPON THE CUSTOMER'S USE OF THE SAME IN CONFORMANCE WITH THE EQUIPMENT'S USER MANUAL. IT IS HEREBY AGREED TO OTHERUSE AS A PART OF THE TERMS OF SALE.

CUSTOMER	
CUSTOMER ORDER NO.	WORK ORDER NO.
DRAWN BY: SH	AUTH BY: SH
DATE: 04-10-15	REV: 1
DRAWING/FILE NO.: B70E001	SHEET: 1/1



AUTOMATIC TRANSFER SWITCH
MODEL TS 87 A A1 1 A
SCHEMATIC DIAGRAM
A V Ø W Hz

