

**TRANSFER SWITCH OPTIONS**

ENCLOSURE TYPE NEMA 3R

SIZE (AMPS) 800A  1000A  1200A

2 POLE  3 POLE  4 POLE

SOLID NEUTRAL

TRANSFER SWITCH CONFIGURATION

SL-  SR-  XL-  XR-

WARNING: SWITCHING DEVICES ARE MECHANICALLY LOCKED TO OPEN AT A TIME. REFER TO THE SCHEMATIC DIAGRAM.

WARNING: TRANSFER SWITCH OPTIONS SEE SCHEMATIC DIAGRAM.

WARNING: TRANSFER SWITCH OPTIONS SEE SCHEMATIC DIAGRAM.

WARNING: TRANSFER SWITCH OPTIONS SEE SCHEMATIC DIAGRAM.

CONNECTION DATA

UTILIZATION: 1-4C 2/0-500MCM Cu/Al PER PHASE/NEUTRAL

SENSING: 1-4C 2/0-500MCM Cu/Al PER PHASE/NEUTRAL

LOAD: 1-4C 2/0-500MCM Cu/Al PER PHASE/NEUTRAL

GROUND: 12C #8-250MCM Cu/Al

SPECIAL REQUIREMENTS

ENCLOSURE NEMA 3R ALUMINUM

CUSTOMER PENNAC POWER SYSTEM

ORDER NUMBER: W-033986-01

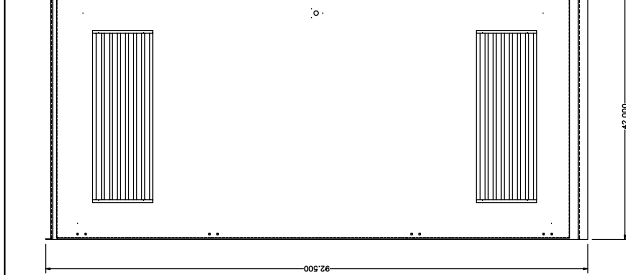
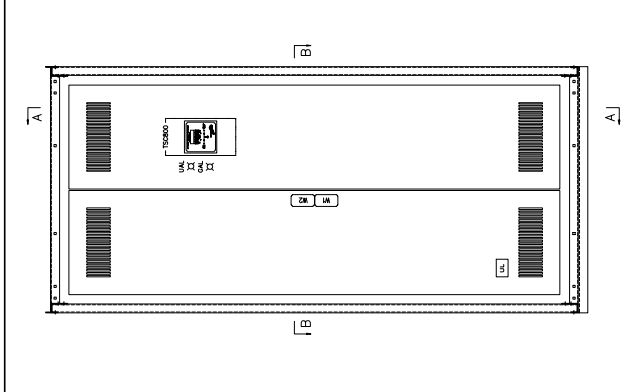
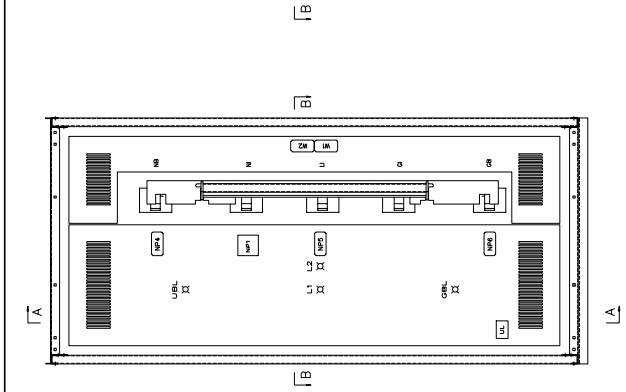
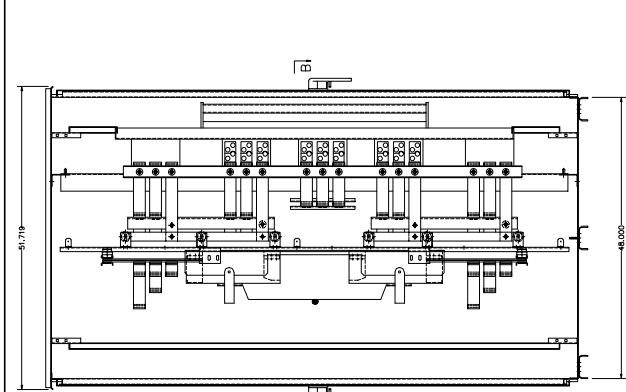
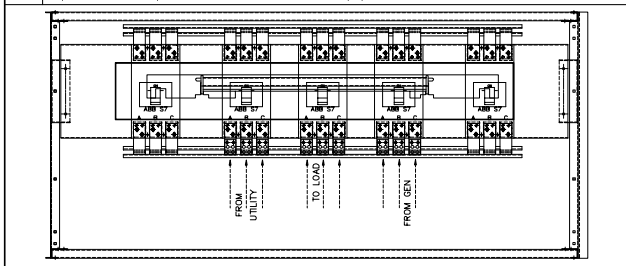
WORK ORDER NO. 0

DATE: 05-10-13

REV: 0

BY: SH

1/2



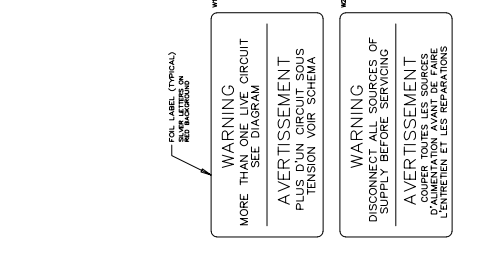
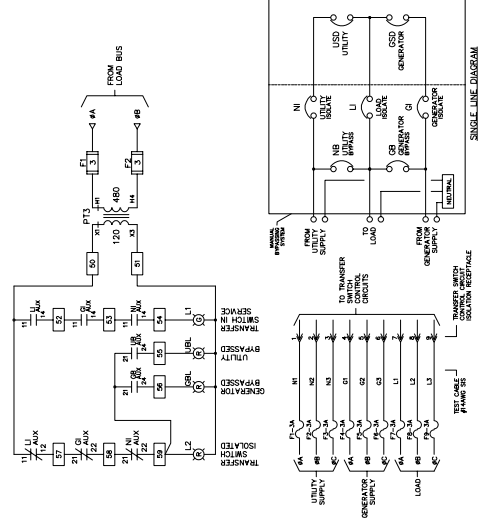
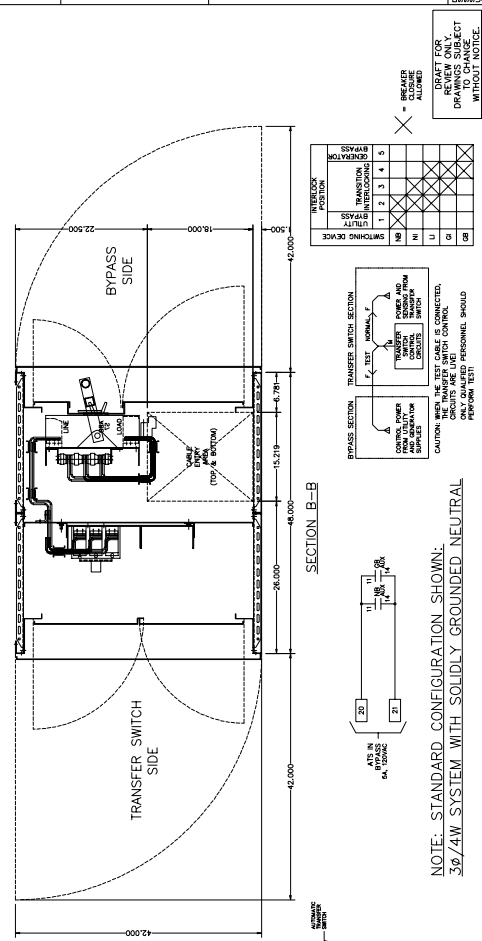
FRONT & REAR

SECTION A-A

BYPASS SIDE (INSIDE DOORS)

TRANSFER SWITCH SIDE (INSIDE DOORS)

BYPASS SIDE (DOORS REMOVED)



NOTE: STANDARD CONFIGURATION SHOWN: 3Ø/4W SYSTEM WITH SOLIDLY GROUNDED NEUTRAL

CAUTION: WHEN THE TEST CABLE IS CONNECTED, THE TRANSFER SWITCH WILL OPERATE. ONLY QUALIFIED PERSONNEL SHOULD PERFORM TEST.

TRANSFER SWITCH SECTION: F. TEST, MANUAL, L. TRANSFER POWER FROM SUPPLY TO LOAD. BREAKER MUST BE OPEN TO CHANGE POSITION.

TRANSFER SWITCH SECTION: F. TEST, MANUAL, L. TRANSFER POWER FROM SUPPLY TO LOAD. BREAKER MUST BE OPEN TO CHANGE POSITION.

TRANSFER SWITCH SECTION: F. TEST, MANUAL, L. TRANSFER POWER FROM SUPPLY TO LOAD. BREAKER MUST BE OPEN TO CHANGE POSITION.

TRANSFER SWITCH SECTION: F. TEST, MANUAL, L. TRANSFER POWER FROM SUPPLY TO LOAD. BREAKER MUST BE OPEN TO CHANGE POSITION.

TRANSFER SWITCH SECTION: F. TEST, MANUAL, L. TRANSFER POWER FROM SUPPLY TO LOAD. BREAKER MUST BE OPEN TO CHANGE POSITION.

TRANSFER SWITCH SECTION: F. TEST, MANUAL, L. TRANSFER POWER FROM SUPPLY TO LOAD. BREAKER MUST BE OPEN TO CHANGE POSITION.

TRANSFER SWITCH SECTION: F. TEST, MANUAL, L. TRANSFER POWER FROM SUPPLY TO LOAD. BREAKER MUST BE OPEN TO CHANGE POSITION.

TRANSFER SWITCH SECTION: F. TEST, MANUAL, L. TRANSFER POWER FROM SUPPLY TO LOAD. BREAKER MUST BE OPEN TO CHANGE POSITION.

TRANSFER SWITCH SECTION: F. TEST, MANUAL, L. TRANSFER POWER FROM SUPPLY TO LOAD. BREAKER MUST BE OPEN TO CHANGE POSITION.

TRANSFER SWITCH SECTION: F. TEST, MANUAL, L. TRANSFER POWER FROM SUPPLY TO LOAD. BREAKER MUST BE OPEN TO CHANGE POSITION.

TRANSFER SWITCH SECTION: F. TEST, MANUAL, L. TRANSFER POWER FROM SUPPLY TO LOAD. BREAKER MUST BE OPEN TO CHANGE POSITION.

TRANSFER SWITCH SECTION: F. TEST, MANUAL, L. TRANSFER POWER FROM SUPPLY TO LOAD. BREAKER MUST BE OPEN TO CHANGE POSITION.

TRANSFER SWITCH SECTION: F. TEST, MANUAL, L. TRANSFER POWER FROM SUPPLY TO LOAD. BREAKER MUST BE OPEN TO CHANGE POSITION.

TRANSFER SWITCH SECTION: F. TEST, MANUAL, L. TRANSFER POWER FROM SUPPLY TO LOAD. BREAKER MUST BE OPEN TO CHANGE POSITION.

TRANSFER SWITCH SECTION: F. TEST, MANUAL, L. TRANSFER POWER FROM SUPPLY TO LOAD. BREAKER MUST BE OPEN TO CHANGE POSITION.

TRANSFER SWITCH SECTION: F. TEST, MANUAL, L. TRANSFER POWER FROM SUPPLY TO LOAD. BREAKER MUST BE OPEN TO CHANGE POSITION.

TRANSFER SWITCH SECTION: F. TEST, MANUAL, L. TRANSFER POWER FROM SUPPLY TO LOAD. BREAKER MUST BE OPEN TO CHANGE POSITION.

TRANSFER SWITCH SECTION: F. TEST, MANUAL, L. TRANSFER POWER FROM SUPPLY TO LOAD. BREAKER MUST BE OPEN TO CHANGE POSITION.

TRANSFER SWITCH SECTION: F. TEST, MANUAL, L. TRANSFER POWER FROM SUPPLY TO LOAD. BREAKER MUST BE OPEN TO CHANGE POSITION.

TRANSFER SWITCH SECTION: F. TEST, MANUAL, L. TRANSFER POWER FROM SUPPLY TO LOAD. BREAKER MUST BE OPEN TO CHANGE POSITION.

TRANSFER SWITCH SECTION: F. TEST, MANUAL, L. TRANSFER POWER FROM SUPPLY TO LOAD. BREAKER MUST BE OPEN TO CHANGE POSITION.

TRANSFER SWITCH SECTION: F. TEST, MANUAL, L. TRANSFER POWER FROM SUPPLY TO LOAD. BREAKER MUST BE OPEN TO CHANGE POSITION.

TRANSFER SWITCH SECTION: F. TEST, MANUAL, L. TRANSFER POWER FROM SUPPLY TO LOAD. BREAKER MUST BE OPEN TO CHANGE POSITION.

APPROVED FOR CONSTRUCTION  MASTER COPY  REFERENCE COPY  MULTIPLE UNIT WORK ORDER  RELEASED FOR INFORMATION  AUTH. BY: DATE: DRAWING NO. REVISIONS BY AUTH. DATE

THOMSON TECHNOLOGY  
FOR THE ENERGY BUSINESS

ATS & BYPASS SYSTEM MODEL IBS 880 1 LINE DIAGRAM, LAYOUT & INSTALLATION DETAILS 1000A

© THE INFORMATION CONTAINED HEREIN IS THE PROPERTY OF THOMSON TECHNOLOGY AND IS NOT TO BE REPRODUCED OR TRANSMITTED IN ANY FORM OR BY ANY MEANS, ELECTRONIC OR MECHANICAL, INCLUDING PHOTOCOPYING, RECORDING, OR BY ANY INFORMATION STORAGE AND RETRIEVAL SYSTEM, WITHOUT PERMISSION IN WRITING FROM THOMSON TECHNOLOGY.

