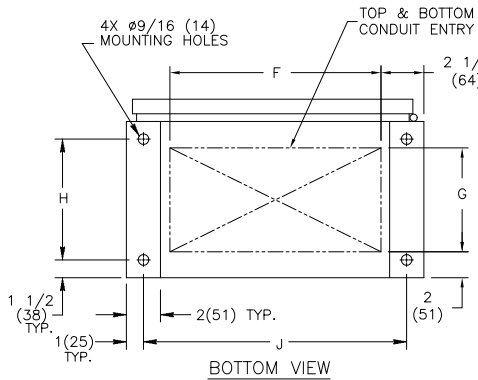


NOTES:

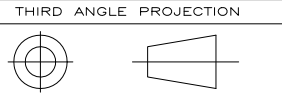
- MATERIAL:
 - 12 GA. 1018 HRS .104(3) REF. (F-1834MP)
 - 14 GA. 1018 HRS .074(2) REF. (F-1830MP AND F-1866MP)
 - 16 GA. 1018 HRS .0598(1.5) REF. (F-1828MP)
 UNLESS OTHERWISE NOTED.
- FINISH: ANSI 61 GREY
- ALL DIMENSIONS ARE FOR REFERENCE ONLY AND SHOWN IN INCHES(MM).
- CONSTRUCTION PER UL 1008
- A ZTS 40A-150A WHEN ORDERED WITH THE FOLLOWING OPTIONS WILL REQUIRE A LARGER ENCLOSURE OF 46"H X 24"W X 14"D: A62(T), DIGITAL METER, HT, HH, K, LDS, L11, N1, N2, OCVR-1SG, OCVR-1SS, P2, Q2M, Q3M, Q7M, R26(D).
- A ZTSCT 100A-400A WHEN ORDERED WITH COMPRESSION LUG OPTION WILL REQUIRE A LARGER ENCLOSURE OF 74"H X 40"W X 19.5"D
- FOR SEISMIC MOUNTING, REFER TO SHEET NO.4

CABINET DIMENSIONS									
CABINET	A	B	C	D	E	F	G	H	J
F-1830MP	46 (1168)	24 (610)	14 (356)	42 (1067)	20 (508)	19 (483)	6 (152)	--	--
F-1834MP	70 (1778)	40 (1016)	19 1/2 (495)	66 (1676)	36 (914)	35 (889)	11 (279)	15 1/2 (394)	38 (965)
F-1828MP	24 (610)	18 (457)	11 (279)	20 (508)	16 (406)	13 (330)	4 (102)	--	--
F-1866MP	62 (1575)	24 (610)	19 1/2 (495)	58 (1473)	20 (508)	19 (483)	14 1/2 (368)	15 1/2 (394)	22 (559)



REVISIONS			
REV.	DESCRIPTION	DATE	APPROVED
M	S-8823 REVISED DRAWING	4/19/09	PM MAS

MODEL	AMPERAGE	NO. POLES	NEMA CABINET	LUG RANGE	WIRE BENDING SPACE		WIRE GUTTERS	
					P(TOP)	R(BOTTOM)	S(LEFT)	T(RIGHT)
ZTS	40-150	2,3	F-1828MP	#8-3/0 (8-85mm ²)	7 (178)	8 (203)	3 1/2 (89)	5 7/8 (149)
		4					4 1/2 (114)	
	225-400	2	F-1830MP	#4-600 MCM (21-304mm ²)	14 3/4 (375)	14 5/8 (371)	4 7/8 (124)	7 5/8 (194)
		3					4 5/8 (117)	5 9/16 (141)
	600	2,3	F-1834MP	(QTY 2) #2-600 MCM (33-304mm ²)	18 1/2 (470)	18 (457)	19 3/8 (492)	1 1/8 (29)
		4					13 (330)	
800	2,3	F-1834MP	(QTY 4) #2-600 MCM (33-304mm ²)	18 1/2 (470)	18 (457)	17 1/8 (435)	1 1/8 (29)	
	4					10 3/4 (273)		
ZTSD	40-80	2	F-1830MP	#8-3/0 (8-85mm ²)	14 3/4 (375)	14 5/8 (371)	4 7/8 (124)	7 5/8 (194)
		3					4 5/8 (117)	5 9/16 (141)
	100-400	2	F-1830MP	#4-600 MCM (21-304mm ²)	14 3/4 (375)	14 5/8 (371)	4 7/8 (124)	7 5/8 (194)
		3					4 5/8 (117)	5 9/16 (141)
	600	2,3	F-1834MP	(QTY 2) #2-600 MCM (33-304mm ²)	18 1/2 (470)	18 (457)	19 3/8 (492)	1 1/8 (29)
		4					13 (330)	
800	2,3	F-1834MP	(QTY 4) #2-600 MCM (33-304mm ²)	18 1/2 (470)	18 (457)	17 1/8 (435)	1 1/8 (29)	
	4					10 3/4 (273)		
ZTSCT	100-400	3	F-1866MP	(QTY 1) #4-600 MCM (33-304mm ²)	15 (342)	13 1/2 (365)	6 (152)	4 1/4 (108)
		4					6 (152)	2 1/4 (57)
	600	2,3	F-1834MP	(QTY 2) #2-600 MCM (33-304mm ²)	18 1/2 (470)	18 (457)	19 3/8 (492)	1 1/8 (29)
4	13 (330)							
800	2,3	F-1834MP	(QTY 4) #2-600 MCM (33-304mm ²)	18 1/2 (470)	18 (457)	17 1/8 (435)	1 1/8 (29)	
	4					10 3/4 (273)		



GE PROPRIETARY AND CONFIDENTIAL INFORMATION

This document is the property of General Electric Company ("GE") and contains proprietary information of GE. This document is loaned on the express condition that neither it nor the information contained therein shall be disclosed to others without the express written consent of GE Industrial Systems, and that the information shall be returned to GE upon its request. This document may be subject to certain restrictions under U.S. export control laws and regulations.

AutoCad Generated

SIGNATURES	DATE
MODEL EC	11/01/00
DETAIL	
CHECKED	
ENGRG	
MFG	
QUALITY	
ISSUED	
DRAWING FILE:	50c-1034-m-1.dwg
MODEL / ASSEMBLY FILE:	ZTS(D/C) (40-800 AMP)
# CTOs	⊕ CRITICAL TO QUALITY CHARACTERISTIC

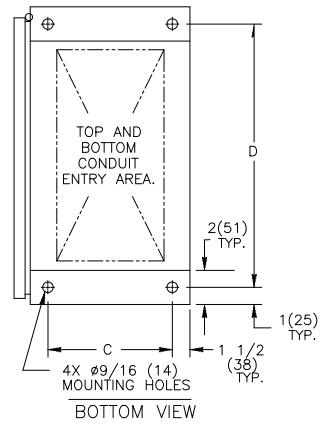
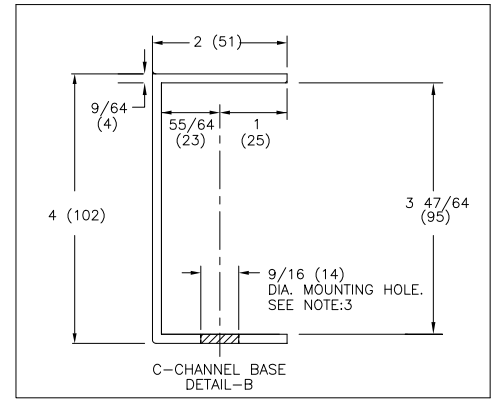
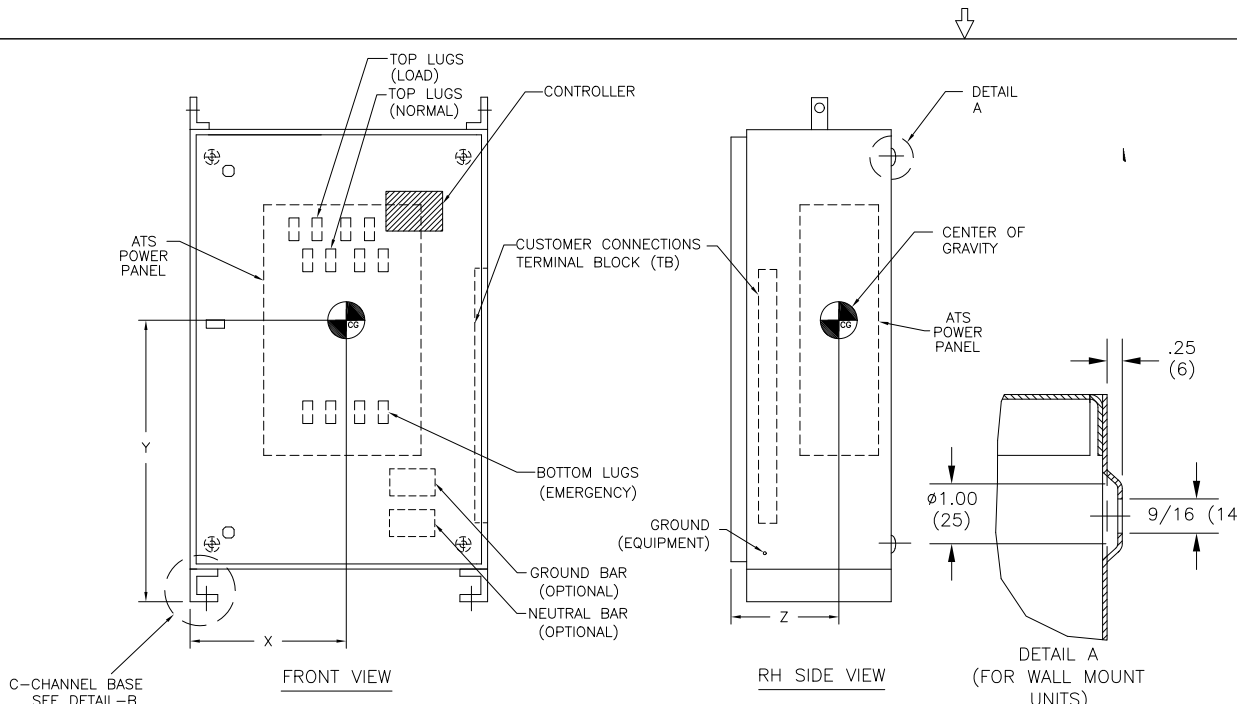
GE Zenith Controls

TITLE: TRANSFER SWITCHES NEMA 1 ENCLOSURE

FIRST MADE FOR: CAGE CODE DWG NO

B 50C-1034

SCALE: N/A SHEET 1 OF 4



REVISIONS			
REV.	DESCRIPTION	DATE	APPROVED
M	S-8823 ESTABLISHED DRAWING	4/14/09	PM MAS

NOTES:
 1. ALL DIMENSIONS ARE FOR REFERENCE ONLY AND SHOWN IN INCHES (MILLIMETERS).
 2. SEISMIC DATA OF MOST VULNERABLE ATS CONSTRUCTION WITHIN ITS PLATFORM:

MAXIMUM DEFLECTION AT TOP OF GEAR:	dss=0.69 INCHES (18 mm) dfb=0.21 INCHES (5 mm)
QUALIFIED BY:	TIME HISTORY SHAKE TABLE TEST IEEE-693-2005-HIGHx2.5 (64 mm) IBC-2003-300%G
RESONANCE FREQUENCIES:	fss=10.9 Hz ffb=19.5 Hz fv=>33.0 Hz
MAXIMUM REACTION TO ANY BOLT: (DEAD LOAD +/- SEISMIC)	Vss=945 LBS (430 KG) SHEAR Vfb=945 LBS (430 KG) SHEAR Tv=1872 LBS (851 KG) UP Pv=2613 LBS (1188 KG) DOWN

3. BOLT ENCLOSURE FROM C-CHANNEL BASE (SEE DETAIL B) USING THE FOLLOWING SEISMIC CERTIFIED MOUNTING HARDWARE PER MOUNTING HOLE: (HARDWARE PROVIDED BY INSTALLER).
- 1/2-13 GRADE 5 BOLT TORQUE TO 15 FT-LBS. (95 NEWTON METERS).
 - US STANDARD HIGH STRENGTH ZINC-PLATED FLAT WASHER 5/8 (16) I.D. AND 1-1/2 (38) O.D.
 - 1/2 (13) HELICAL SPRING LOCK WASHER.
4. CENTER OF GRAVITY DIMENSIONS ARE FOR REFERENCE ONLY.
 5. SWITCH IS DESIGNED FOR BOTH TOP AND BOTTOM CABLE ENTRY. STANDARD SWITCH CONFIGURATION IS FOR TOP LUGS LOAD AND NORMAL AND BOTTOM LUGS EMERGENCY. REFER SHEET 1 TO 3 FOR CABLE BENDING SPACE AND GUTTER SPACE DETAILS.
 6. SWITCH SUPPLIED WITH STANDARD MECHANICAL LUG. REFER SHEET 1 TO 3 FOR LUG DETAILS.
 7. ALL CONTROL WIRES (18-12 AWG) MUST BE TORQUED TO 19 in-lbs. (2 N-m)
 8. LUG TORQUE ARE APPLICABLE FOR CU & AL CABLES.
 9. FOR WORKING CLEARANCE REFER TO NATIONAL AND LOCAL CODES AND STANDARDS.
 10. NEMA 4(X) AND 12 ENCLOSURE TYPE ATS WILL COME WITH WINDOW KIT (NOT SHOWN).

SOCKET SIZE ACROSS FLATS	TORQUE	
	Lb-Ft	N-m
1/8	4	5.4
5/32	8	10.9
3/16	10	13.6
7/32	12	16.3
1/4	17	23.1
5/16	23	31.2
3/8	31	42.1
1/2	42	57.0
9/16	50	67.9

AMP	POLE	WEIGHT LB(kg)	CENTER OF GRAVITY in(mm)		
			X	Y	Z
40-225	2,3	120(59)	11.3 (287)	23.2 (589)	10.8 (274)
	4	126(57)	12.7 (322)	10.9 (277)	43.6 (1107)
*100-400	3	125(57)	12.7 (322)	10.9 (277)	43.6 (1107)
	4	146(66)	11.6 (295)	23.0 (584)	8.0 (203)
260-400	2,3	168(76)	11.6 (295)	23.0 (584)	8.0 (203)
	4	180(82)	11.6 (295)	23.0 (584)	8.0 (203)
600	3	410(186)	23.5 (597)	34.0 (864)	11.5 (292)
	4	440(200)	22.0 (559)	35.0 (889)	12.0 (305)
800	3	460(209)	22.0 (559)	35.0 (889)	12.0 (305)
	4	490(223)	22.0 (559)	35.0 (889)	12.0 (305)

* FOR ZTSCT 100-400A MODELS ONLY

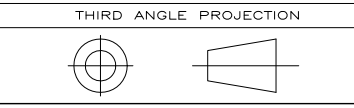
SIGNATURES	DATE
MODEL EC	11/01/00
DETAIL	
CHECKED	
ENGR	
MFG	
QUALITY	
ISSUED	
DRAWING FILE:	50C-1034-m-4.dwg
MODEL / ASSEMBLY FILE:	ZTS(D/C1) (40-800 AMP)
# CTOs	⊖ CRITICAL TO QUALITY CHARACTERISTIC

GE Zenith Controls

TITLE: NEMA 1 ENCLOSURE SEISMIC MTG. DETAIL

FIRST MADE FOR: SIZE B CAGE CODE DWG NO 50C-1034

SCALE: N/A SHEET 4 OF 4



GE PROPRIETARY AND CONFIDENTIAL INFORMATION

This document is the property of General Electric Company ("GE") and contains proprietary information of GE. This document is loaned on the express condition that neither it nor the information contained therein shall be disclosed to others without the express written consent of GE Industrial Systems, and that the information shall be used by the recipient only as approved expressly by GE Industrial Systems. This document shall be returned to GE upon its request. This document may be subject to certain restrictions under U.S. export control laws and regulations.

AutoCad Generated