



Shown with optional equipment.

## Ratings Range — 60 Hertz Operation

Standby:	kW	1590-2000
	kVA	1988-2500
Prime:	kW	1440-1820
	kVA	1800-2275

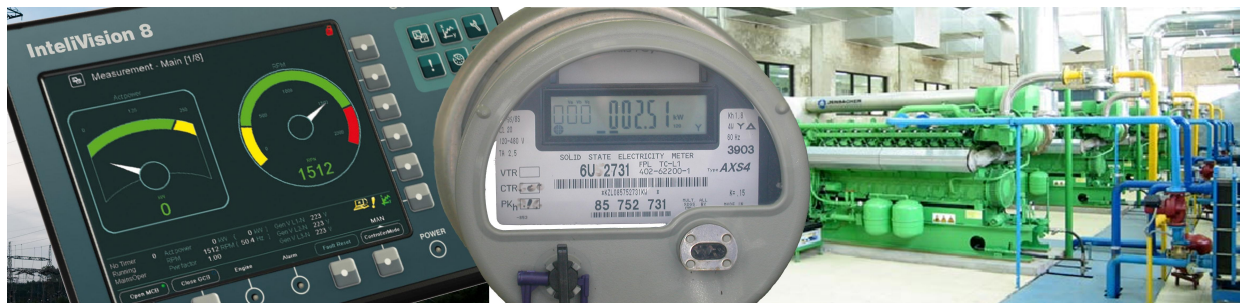
## FEATURES

- Single source responsibility for the generator set and accessories.
- Prototype and production tested to insure one step load acceptance per NFPA 110.
- Two year limited warranty on generator sets and accessories. Extended warranties also available.
- Unit conforms to CSA, NEMA, EGSA, ANSI and other standards.
- Heavy duty 4 cycle industrial engine for reliability and fuel efficiency.
- Brushless rotating field generator with class H insulation.
- Heavy duty steel base with integral vibration isolators.
- Tier 2 EPA-Certified for Stationary Emergency Applications.

## GEN SET RATINGS

Genset Model Number	Alternator	Voltage L-N / L-L	Phase	Hertz	130° Rise Standby Rating		105° Rise Prime Rating	
					kW / kVA	Amps	kW / kVA	Amps
TD2000	744RSL4054	220/380	3	60	1590/1988	3020	1440/1800	2735
		240/416	3	60	1840/2300	3192	1680/2100	2915
		277/480	3	60	2000/2500	3007	1820/2275	2736

**RATINGS:** All three-phase units are rated at 0.8 power factor. All single-phase units are rated at 1.0 power factor.  
**STANDBY RATINGS:** Standby ratings apply to installations served by a reliable utility source. The standby rating is applicable to varying loads for the duration of a power outage. There is no overload capability for this rating. Ratings are in accordance with ISO-3046/1, BS 5514, AS 2789, and DIN 6271.  
**PRIME POWER RATINGS:** Prime power ratings apply to installations where utility power is unavailable or unreliable. At varying load the number of generator set operating hours is unlimited. A 10% overload capacity is available for one hour in twelve. Ratings are in accordance with ISO-8528/1, overload power in accordance with ISO-3046/1, BS5514, AS2789, and DIN 6271. For limited running time and base load ratings consult the factory. The generator set manufacturer reserves the right to change the design or specifications without notice and without any obligation or liability whatsoever.  
**GENERAL GUIDELINES FOR DERATION:** Altitude: Derate 0.5% per 100m (328 ft.) elevation above 1000m (3279 ft.) Temperature: Derate 1.0% per 10°C (18°F) temperature above 40°C (104°F).





# Generator Controller Options



- Dashboard Style LCD Panel
- NFPA 110
- SAE J1939 ECU Communications
- Load Share Synch Features
- Metering, Data Trending, Alarms
- Engine Status Indicators
- Fuel Consumption
- CanBus, ModBus
- Ethernet Communications
- Remote Contacts Form C, RS 232/485
  
- Internet Bridge Module
- Internet Connection & Web Browser
- Remote Access & Control
- IntelliMonitor Network Management
- SNMP, PC SCADA
- Site Overview & Statistic Settling
- Automatic Downloads, Report Writer
- Receive Emails or IM Text
- CAT 5e, RS232/485, RJ 45
- Ethernet or Dial Up Connection
- Fleet Scalability

# Alternator Specifications

<b>Manufacturer</b>	Marathon	<ul style="list-style-type: none"> <li>• NEMA MG1, IEEE, AND ANSI standards compliance for temperature and motor starting.</li> <li>• Sustained short-circuit current of the rated current for up to 10 seconds.</li> <li>• Sustained short-circuit current enabling downstream circuit breakers to trip without collapsing the alternator field.</li> <li>• Self-ventilated and dripproof construction.</li> <li>• Superior voltage waveform from a two-thirds pitch stator and skewed rotor.</li> <li>• Linkboards</li> <li>• Optimized Electrical Design</li> <li>• Enhanced Ventilation</li> <li>• Fully Guarded</li> <li>• Heavy Duty Bearings</li> </ul>
<b>Type</b>	Ext. Voltage Regulated, Brushless	
<b>Gen Frame</b>	MAGNAMAX	
<b>Insulation</b>	NEMA	
<b>Material</b>	Class H	
<b>Temperature Rise</b>	130 °C, Standby	
<b>Hertz</b>	60	
<b>Phase</b>	3	
<b>RPM</b>	1800	
<b>Exciter</b>	Rotating	
<b># Leads</b>	12 Reconnectable or 4 Single Phase	
<b>PF</b>	0.8	
<b>Ambient</b>	40°C	
<b>Coupling Single Bearing</b>	Flexible	
<b>Amortisseur Windings</b>	Full	
<b>Cooling Air Volume</b>	250 CFM	
<b>Peak Motor Starting</b>	35% Voltage Dip, 7000 kVA	
<b>Voltage Regulation no-load and full-load</b>	3 Phase Sensing 1/2%	

## STANDARD FEATURES

- Heavy Duty Steel Base
- Vibration Isolators
- Oil Drain Valve with Extension
- Battery Rack
- Battery Cables
- High Ambient Unit Mounted Radiator
- Battery Charging Alternator
- Factory Paint
- Factory Test Prior to Shipment
- 2 Year Warranty
- Owners Manual

## AVAILABLE ACCESSORIES

### OPEN UNIT

- Narrow Skid Base
- Radiator Duct Flange
- Ship Loose Flex Exhaust
- Ship Loose Critical Silencer

### ENCLOSED UNIT

- Wide Skid Base
- Standard Enclosure With Internal Silencer
- Sound Attenuated Enclosure With Silencer
- Load Center With Lights and GFI Receptacle
- Sub-Base Fuel Tank

### CONTROLLER

InteliLite Model IL-NT-MRS19

Ethernet Bridge

Remote Annunciator

## MISCELLANEOUS

- Flexible Fuel Lines
- Coolant Drain Kit
- Water Jacket Heater
- Oil Pan Heater
- Generator Strip Heater
- Battery
- Battery Charger
- Pad Type Battery Heater
- Battery Heater Blanket with Thermostat
- Line Circuit Breaker

## WARRANTY

- 3 Year Warranty
- 5 Year Warranty

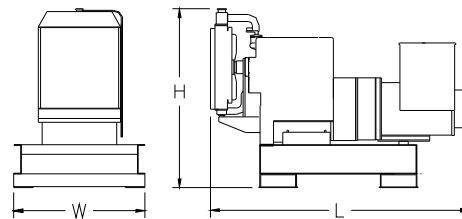
## APPROVALS AND LISTINGS

- UL Standard 2200

## WEIGHTS AND DIMENSIONS

OVERALL SIZE, L x W x H,: 254 in. x 103 in. x 122 in.  
WEIGHT: 35000 lbs.

Note: Dim and weights reflect standard open unit with no options



Note: This drawing is provided for reference only and should not be used for planning installation. Contact your local distributor for more detailed information.

## DISTRIBUTED BY:

PENNCAT CORPORATION  
404 ELM AVENUE  
NORTH WALES, PA 19454  
TEL: (610) 272-0505  
www.PENNCAT.com