



MODEL: TD1000



Shown with optional equipment.

Ratings for 60 Hertz Operation

Standby:	kW	1000
	kVA	1250
Prime:	kW	900
	kVA	1125

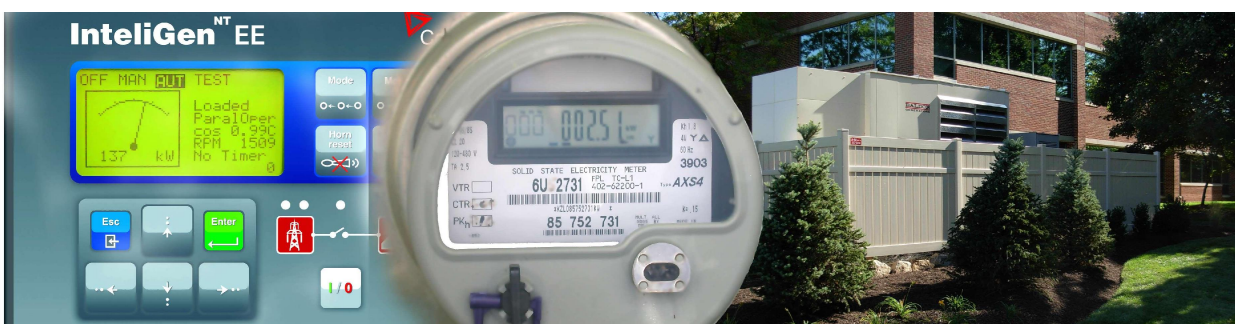
FEATURES

- Single source responsibility for the generator set and accessories.
- Prototype and production tested to insure one step load acceptance per NFPA 110.
- Two year limited warranty on generator sets and accessories. Extended warranties also available.
- Unit conforms to CSA, NEMA, EGSA, ANSI and other standards.
- Heavy duty 4 cycle industrial engine for reliability and fuel efficiency.
- Brushless rotating field generator with class H insulation.
- Heavy duty steel base with integral vibration isolators.
- Tier 2 EPA-Certified for Stationary Emergency Applications.

GEN SET RATINGS

Genset Model Number	Alternator	Voltage L-N / L-L	Phase	Hertz	130° Rise Standby Rating		105° Rise Prime Rating	
					kW / kVA	Amps	kW / kVA	Amps
TD1000	741RSL4045	240/480	3	60	1000/1250	1504	900/1125	1353
		230/460	3	60	1000/1250	1568	900/1125	1412
		220/440	3	60	1000/1250	1640	900/1125	1476
		208/416	3	60	1000/1250	1735	900/1125	1561
		190/380	3	60	840/1050	1595	756/945	1435

RATINGS: All three-phase units are rated at 0.8 power factor. All single-phase units are rated at 1.0 power factor.
 STANDBY RATINGS: Standby ratings apply to installations served by a reliable utility source. The standby rating is applicable to varying loads for the duration of a power outage. There is no overload capability for this rating. Ratings are in accordance with ISO-3046/1, BS 5514, AS 2789, and DIN 6271.
 PRIME POWER RATINGS: Prime power ratings apply to installations where utility power is unavailable or unreliable. At varying load the number of generator set operating hours is unlimited. A 10% overload capacity is available for one hour in twelve. Ratings are in accordance with ISO-8528/1, overload power in accordance with ISO-3046/1, BS5514, AS2789, and DIN 6271. For limited running time and base load ratings consult the factory. The generator set manufacturer reserves the right to change the design or specifications without notice and without any obligation or liability whatsoever.
 GENERAL GUIDELINES FOR DERATION: Altitude: Derate 0.5% per 100m (328 ft.) elevation above 1000m (3279 ft.) Temperature: Derate 1.0% per 10°C (18°F) temperature above 40°C (104°F).



Generator Controller Options



- Dashboard Style LCD Panel
- SAE J1939 ECU Communications
- Load Share Synch Features
- Metering, Data Trending, Alarms
- Engine Status Indicators
- Fuel Consumption
- CanBus, ModBus
- Ethernet Communications
- Remote Contacts Form C, RS 232/485



- Internet Bridge Module
- Internet Connection & Web Browser
- Remote Access & Control
- IntelliMonitor Network Management
- SNMP, PC SCADA
- Site Overview & Statistic Settling
- Automatic Downloads, Report Writer
- Receive Emails or IM Text
- CAT 5e, RS232/485, RJ 45
- Ethernet or Dial Up Connection
- Fleet Scalability

Alternator Specifications

Manufacturer	Marathon
Type	Ext. Voltage Regulated, Brushless
Gen Frame	MAGNAMAX
Insulation	NEMA
Material	Class H
Temperature Rise	130 °C, Standby
Hertz	60
Phase	3
RPM	1800
Exciter	Rotating
# Leads	12 Reconnectable or 4 Single Phase
PF	0.8
Ambient	40°C
Coupling Single Bearing	Flexible
Amortisseur Windings	Full
Cooling Air Volume	250 CFM
Peak Motor Starting	30% Voltage Dip, 2600 kVA
Voltage Regulation no-load and full-load	3 Phase Sensing 1/2%

- NEMA MG1, IEEE, AND ANSI standards compliance for temperature and motor starting.
- Sustained short-circuit current of the rated current for up to 10 seconds.
- Sustained short-circuit current enabling downstream circuit breakers to trip without collapsing the alternator field.
- Self-ventilated and dripproof construction.
- Superior voltage waveform from a two-thirds pitch stator and skewed rotor.
- Linkboards
- Optimized Electrical Design
- Enhanced Ventilation
- Fully Guarded
- Heavy Duty Bearings

STANDARD FEATURES

- Heavy Duty Steel Base
- Vibration Isolators
- Oil Drain Valve with Extension
- Battery Rack
- Battery Cables
- High Ambient Unit Mounted Radiator
- Battery Charging Alternator
- Factory Paint
- Factory Test Prior to Shipment
- 2 Year Warranty
- Owners Manual

AVAILABLE ACCESSORIES

OPEN UNIT

- Narrow Skid Base
- Radiator Duct Flange
- Ship Loose Flex Exhaust
- Ship Loose Critical Silencer

ENCLOSED UNIT

- Wide Skid Base
- Standard Enclosure With Internal Silencer
- Sound Attenuated Enclosure With Silencer
- Load Center With Lights and GFI Receptacle
- Sub-Base Fuel Tank

CONTROLLER

InteliLite Model IL-NT-MRS19
Ethernet Bridge
Remote Annunciator

MISCELLANEOUS

- Flexible Fuel Lines
- Coolant Drain Kit
- Water Jacket Heater
- Oil Pan Heater
- Generator Strip Heater
- Battery
- Battery Charger
- Pad Type Battery Heater
- Battery Heater Blanket with Thermostat
- Line Circuit Breaker

WARRANTY

- 3 Year Warranty
- 5 Year Warranty

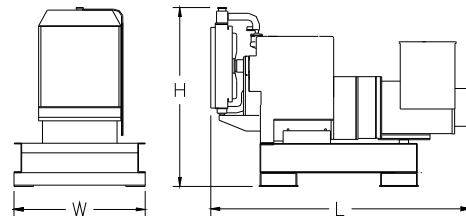
APPROVALS AND LISTINGS

- UL Standard 2200

WEIGHTS AND DIMENSIONS

OVERALL SIZE, L x W x H.; 195 in. x 86 in. x 102.5 in.
WEIGHT: 17807 lbs.

Note: Dim and weights reflect standard open unit with no options



Note: This drawing is provided for reference only and should not be used for planning installation. Contact your local distributor for more detailed information.

DISTRIBUTED BY:

PENNCAT CORPORATION
432 N SPRING GARDEN ST
AMBLER PA 19002
TEL: 610-272-0505
www.PENNCAT.com